



TTK Polyclonal Antibody

Catalog No	YP-Ab-15024
Isotype	IgG
Reactivity	Human;Mouse
Applications	WB;IHC;IF;ELISA
Gene Name	TTK
Protein Name	Dual specificity protein kinase TTK
Immunogen	The antiserum was produced against synthesized peptide derived from human TTK. AA range:642-691
Specificity	TTK Polyclonal Antibody detects endogenous levels of TTK protein.
Formulation	Liquid in PBS containing 50% glycerol, 0.5% BSA and 0.02% sodium azide.
Source	Polyclonal, Rabbit,IgG
Purification	The antibody was affinity-purified from rabbit antiserum by affinity-chromatography using epitope-specific immunogen.
Dilution	WB: 1/500 - 1/2000. IHC: 1/100 - 1/300. ELISA: 1/10000.. IF 1:50-200
Concentration	1 mg/ml
Purity	≥90%
Storage Stability	-20°C/1 year
Synonyms	TTK; MPS1; MPS1L1; Dual specificity protein kinase TTK; Phosphotyrosine picked threonine-protein kinase; PYT
Observed Band	100kD
Cell Pathway	kinetochore,cytoplasm,spindle,membrane,
Tissue Specificity	Present in rapidly proliferating cell lines.
Function	catalytic activity:ATP + a protein = ADP + a phosphoprotein.,function:Phosphorylates proteins on serine, threonine, and tyrosine. Probably associated with cell proliferation.,similarity:Belongs to the protein kinase superfamily.,similarity:Belongs to the protein kinase superfamily. Ser/Thr protein kinase family.,similarity:Contains 1 protein kinase domain.,tissue specificity:Present in rapidly proliferating cell lines.,
Background	TTK protein kinase(TTK) Homo sapiens This gene encodes a dual specificity protein kinase with the ability to phosphorylate tyrosine, serine and threonine. Associated with cell proliferation, this protein is essential for chromosome alignment at the centromere during mitosis and is required for centrosome duplication. It has been found to be a critical mitotic checkpoint protein for accurate segregation of chromosomes during mitosis. Tumorigenesis may occur when this protein fails to degrade and produces excess centrosomes resulting in aberrant mitotic spindles. Alternative splicing results in multiple transcript variants.



[provided by RefSeq, Nov 2009],

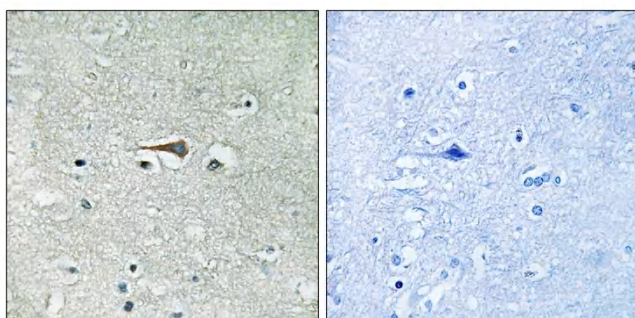
matters needing attention

Avoid repeated freezing and thawing!

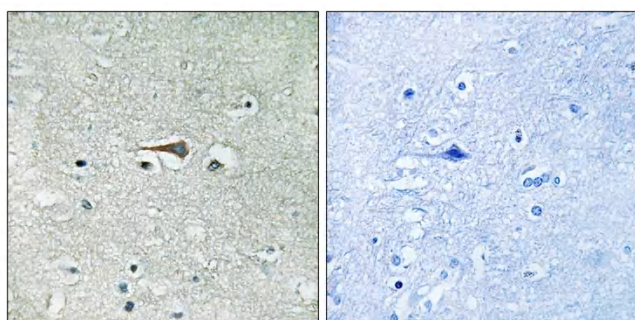
Usage suggestions

This product can be used in immunological reaction related experiments. For more information, please consult technical personnel.

Products Images



Immunohistochemistry analysis of paraffin-embedded human brain tissue, using TTK Antibody. The picture on the right is blocked with the synthesized peptide.



Western blot analysis of lysates from HUVEC cells, treated with etoposide 25uM 24H, using TTK Antibody. The lane on the right is blocked with the synthesized peptide.

